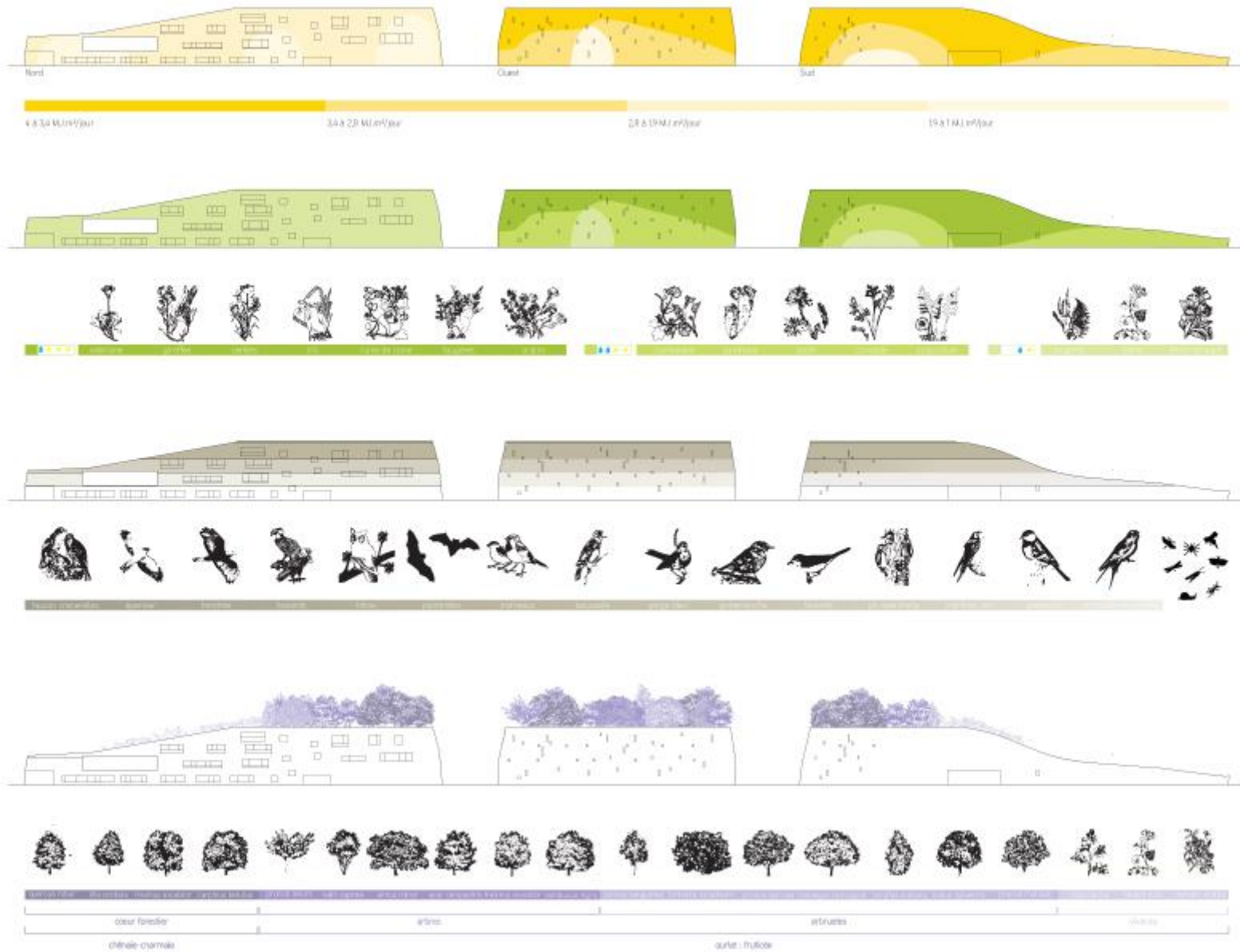
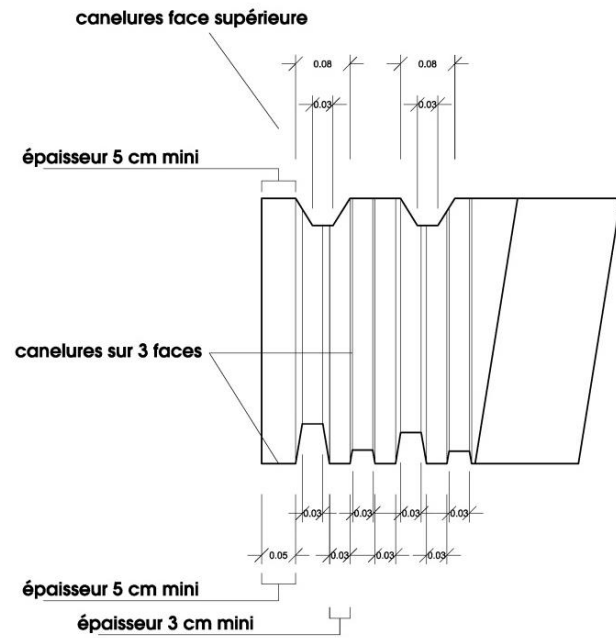
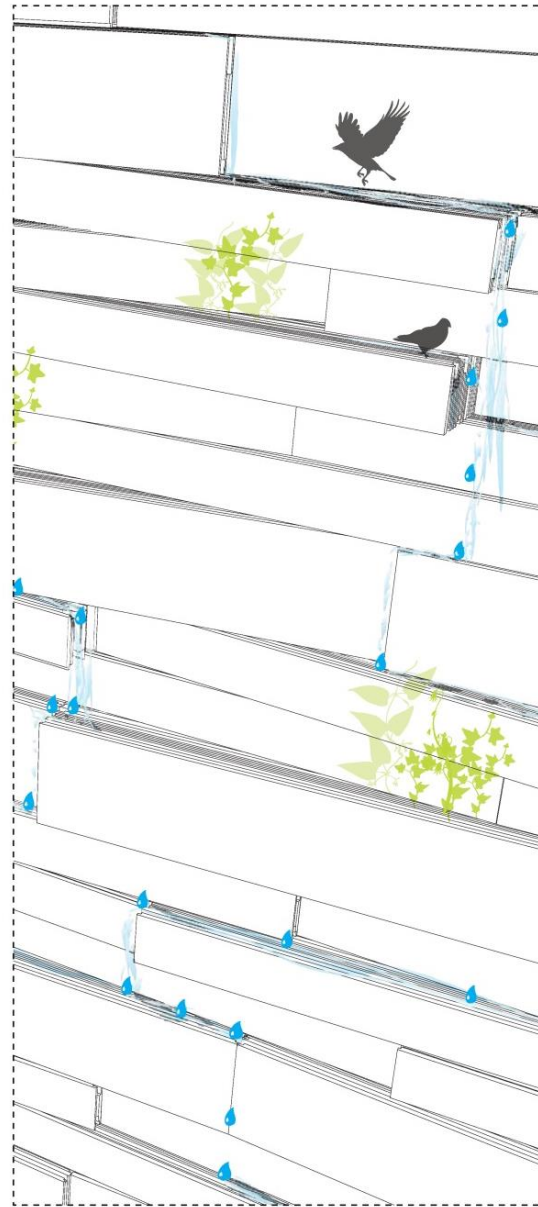
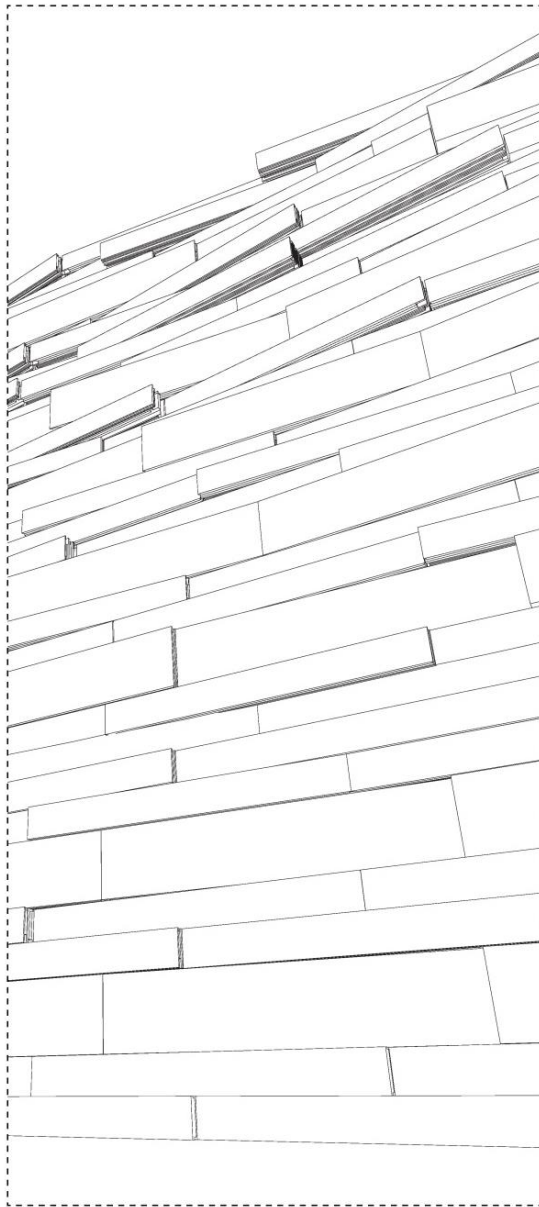


Un mur conçu pour évoluer dans le temps et accueillir une végétation de paroi

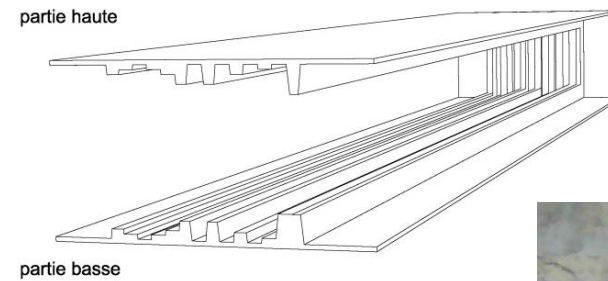


Altimétries et orientations composent un diagramme d'implantation possible





Détails des canelures



Principe du moule des c

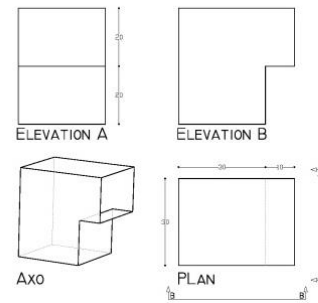


La prise en compte du chemin de l'eau dans la géométrie des blocs



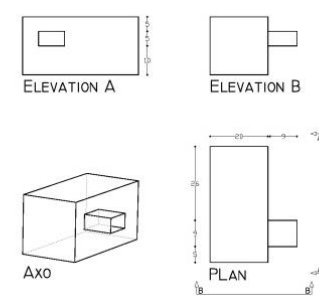
TYPE 5

58-0 FAUCON (H:80cm)



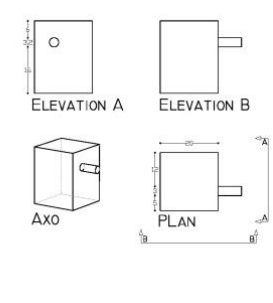
TYPE 1

58-1/2/3/5 MARTINET



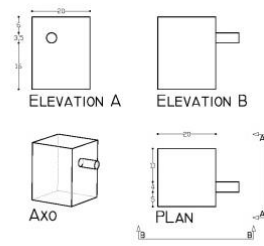
TYPE 4A

48-1 PASSEREAUX



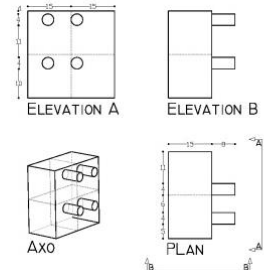
TYPE 4A

48-2 PASSEREAUX



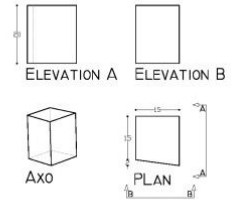
TYPE 4B

48-3 PASSEREAUX (H:80cm)



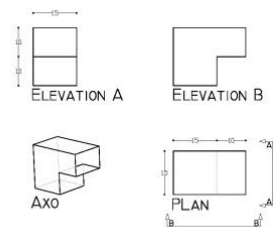
TYPE 6

48-4 58-4 38-0 HIRONDELLE



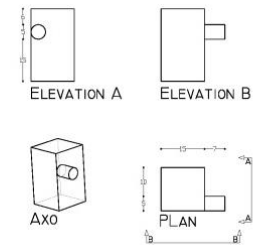
TYPE 2

38-2/3 ROUGE GORGE, ROUGE QUEUE



TYPE 3

31-1 CAVICOLE



TYPE 3

31-2 CAVICOLE





GYMNASIUM

Gymnase
de la Biochimie
ACSB Bâtiment
4080 Université de
Montréal



Sedum



Cymbalaria muralis

