

Victor DE BONO

Responsable de projet, XtreeE



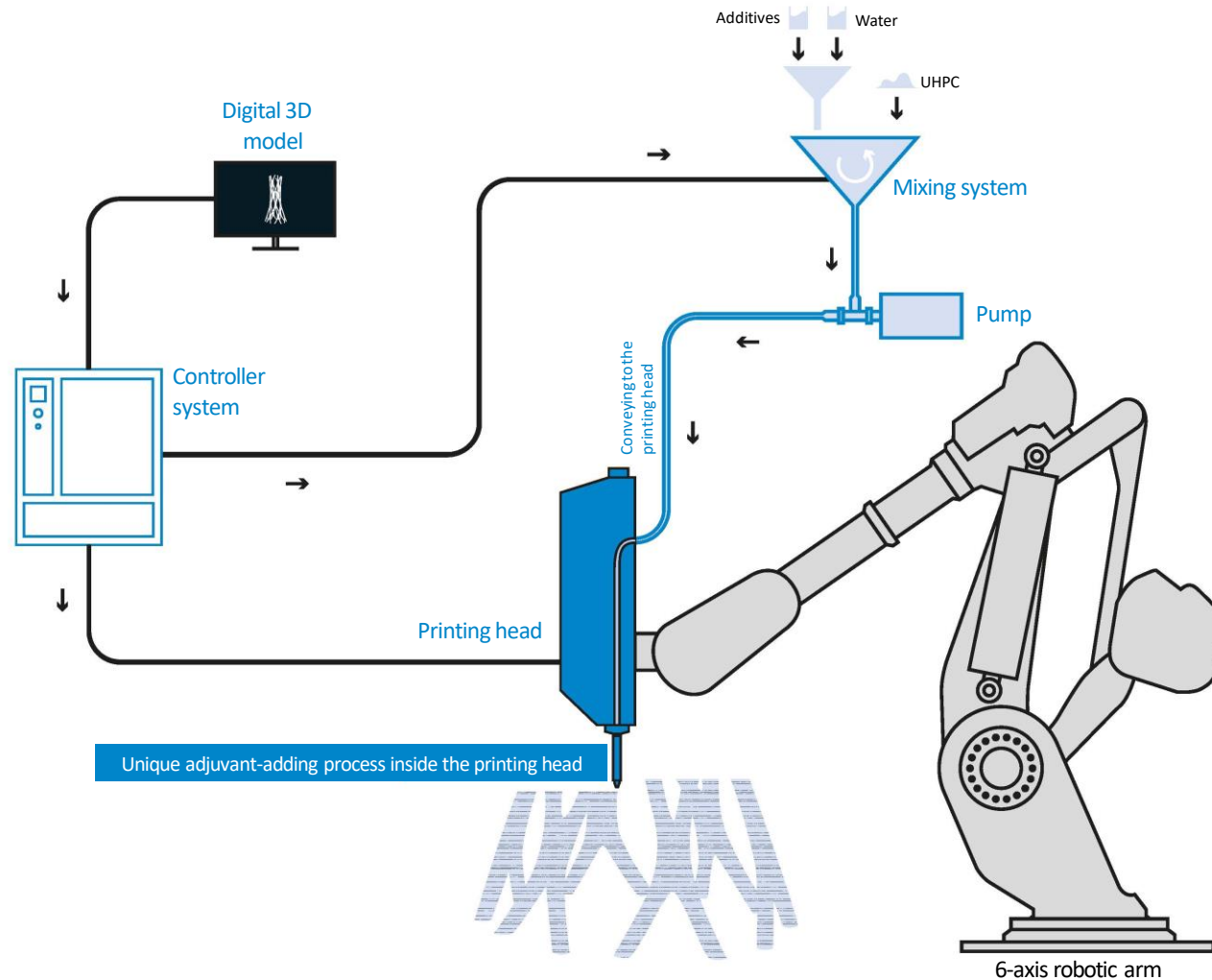
XtreeE[®]
The large-scale 3^d



XtreeE[®]
The large-scale 3^d

Multi-component 3D-printing: a patented technology

XtreeE®
The large-scale 3^d



It takes 30 minutes to print a 2-meter column

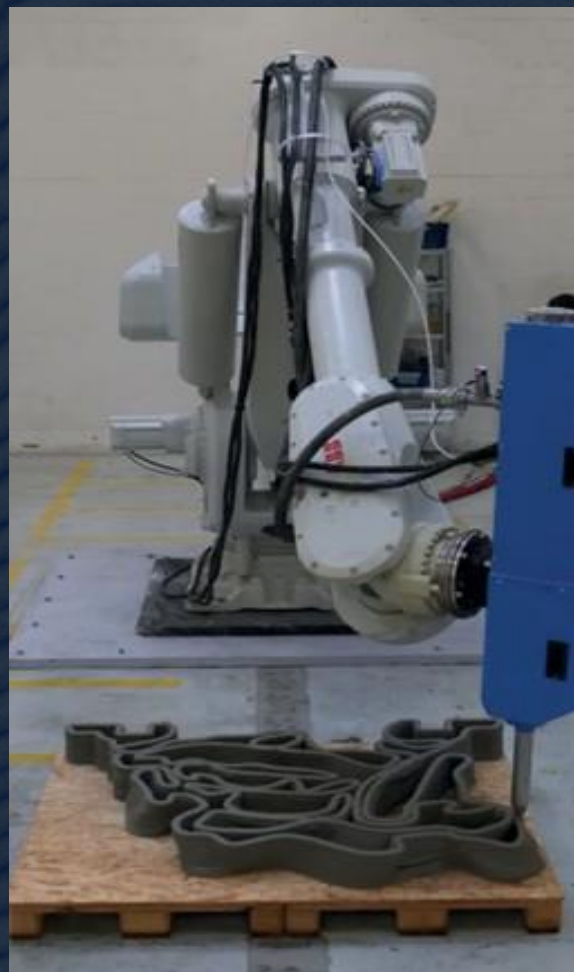
Génie maritime
| *Marine engineering*

| XtreeE[®]
The large-scale 3^d

RÉCIF ARTIFICIEL
| ARTIFICIAL REEF

Marseille (France)





RÉCIF ARTIFICIEL
| *ARTIFICIAL REEF*

Marseille (France)



RÉCIF ARTIFICIEL | *ARTIFICIAL REEF*

Client: Seaboost (Groupe Egis)
Conception | *Design*: XtreeE + Seaboost
Manufacturing files & Manufacturing: XtreeE
Béton 3D | *3DPrint Concrete*: LafargeHolcim

> Marseille (France)

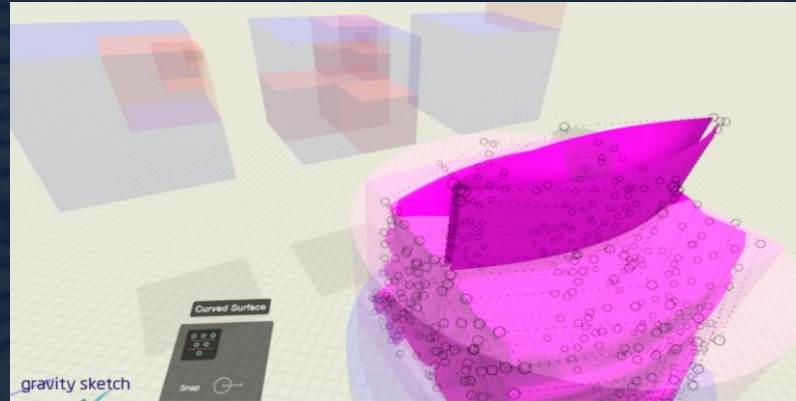
Génie maritime
| Marine engineering

XtreeE®
The large-scale 3^d

RÉCIF ARTIFICIEL
| ARTIFICIAL REEF

Agde (France)

Renaud Dupuy de la Grandrive



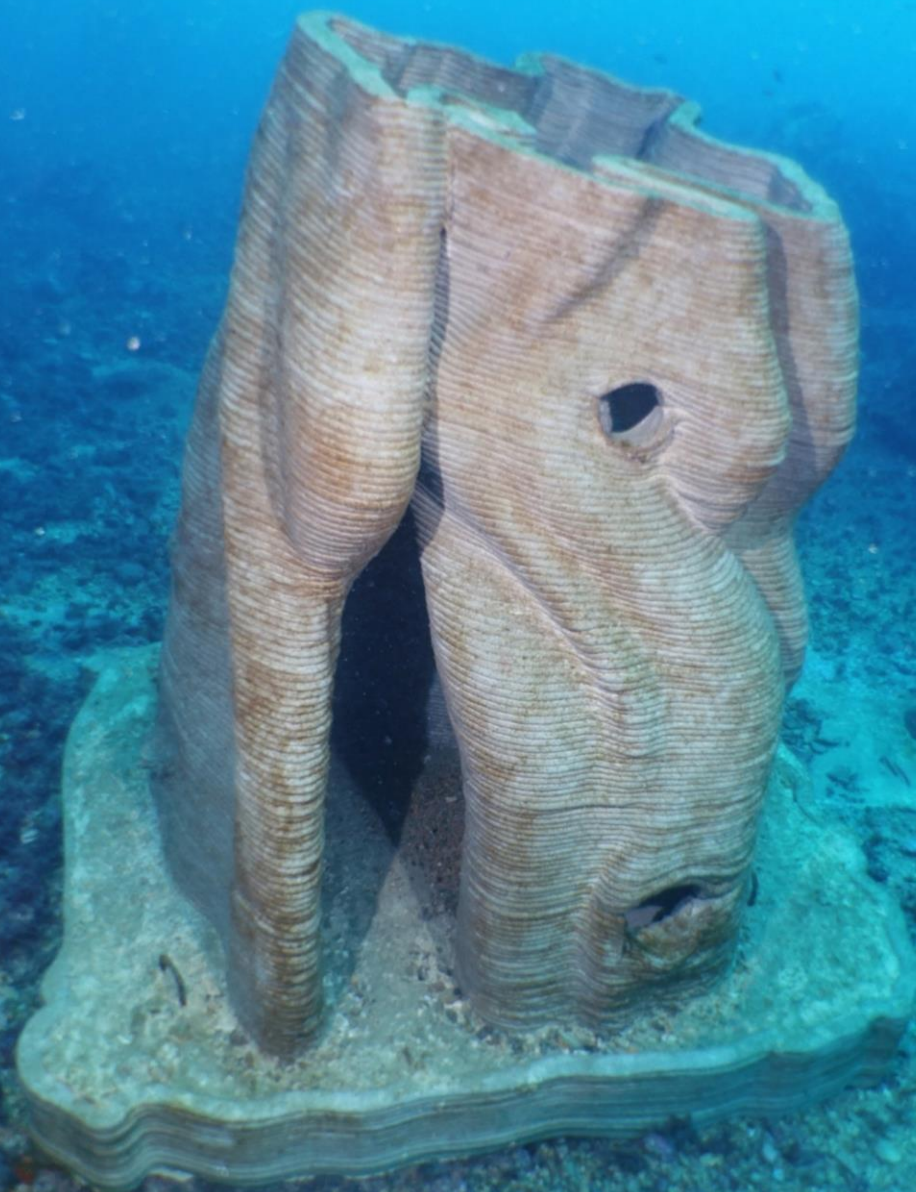
RÉCIF ARTIFICIEL | ARTIFICIAL REEF

Client: Seaboost (Groupe Egis) Conception |
Design: XtreeE + Seaboost
Manufacturing files & Manufacturing: XtreeE
Béton 3D | 3DPrint Concrete: Vicat

> Agde (France)

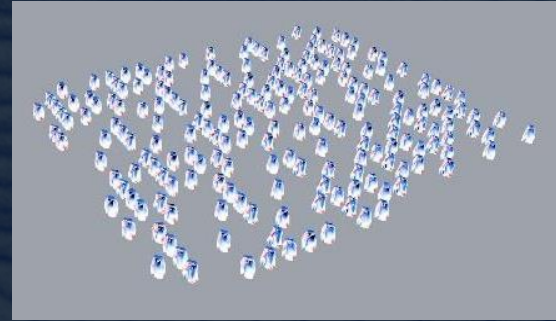
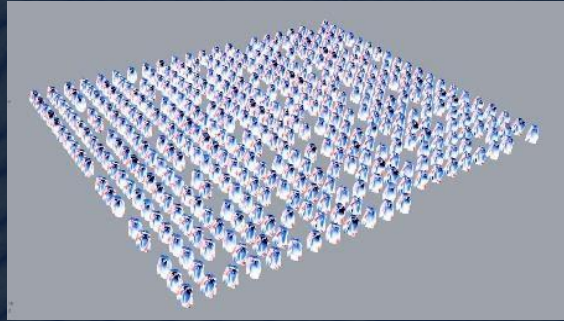
Génie maritime
| *Marine engineering*

XtreeE®
The large-scale 3^d



RÉCIF ARTIFICIEL
| *ARTIFICIAL REEF*

Monaco

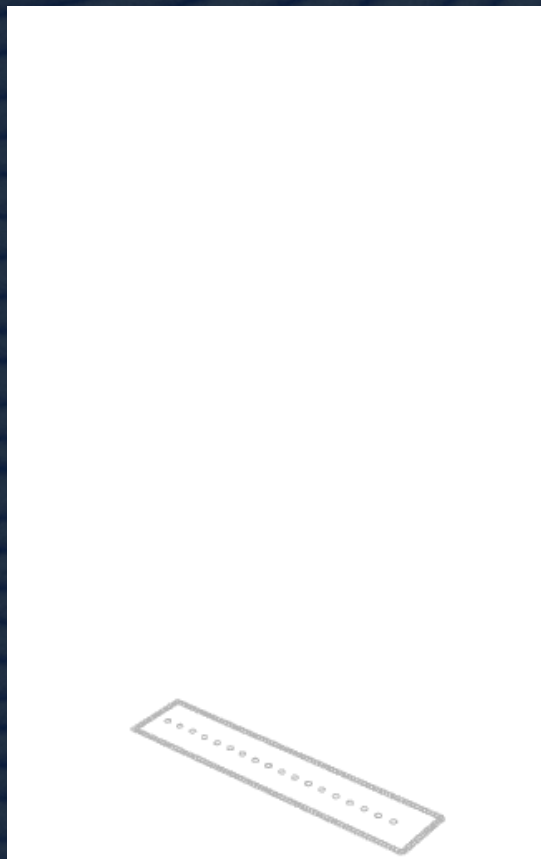


RÉCIF ARTIFICIEL | *ARTIFICIAL REEF*

Client: Setec Invivivo
(Groupe Setec)
Conception | *Design*:
XtreeE + Setec Invivivo

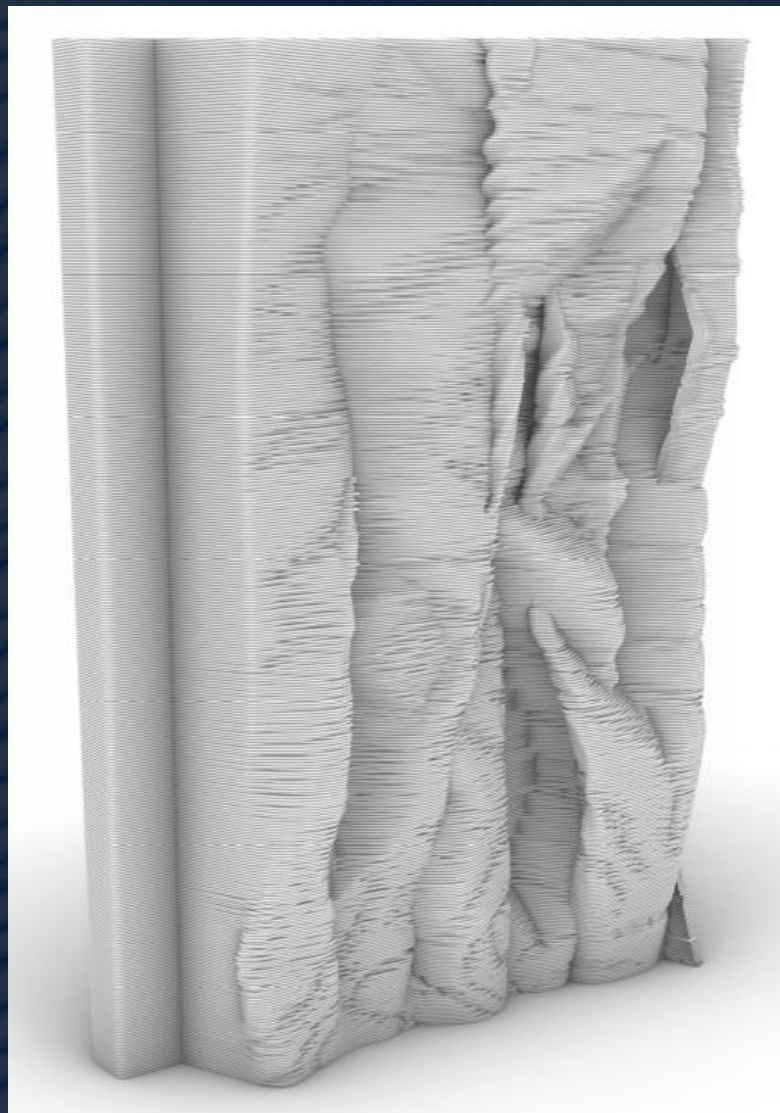
*Manufacturing files &
Manufacturing*: XtreeE
Béton 3D | *3DPrint Concrete*:
LafargeHolcim

> Monaco



RÉCIF ARTIFICIEL
| *ARTIFICIAL REEF*

Monaco



RÉCIF ARTIFICIEL
| *ARTIFICIAL REEF*

Client: Setec Invivo
(Groupe Setec)
Conception | *Design*:
XtreeE + Setec Invivo
Manufacturing files &
Manufacturing: XtreeE

> Monaco

Contact:

XtreeE SAS 18/20, rue du Jura CP 40502
94623 Rungis Cedex

contact@xtreee.com www.xtreee.com



LEONARD

Guillaume BAZOUIN

Open Innovation & Startups, Leonard



equo vivo
VINCI CONSTRUCTION

Lionel D'ALLARD

Directeur d'EQUO VIVO, VINCI Construction



XtreeE®
The large-scale 3^d

Victor DE BONO

Responsable de projet, XtreeE

Des questions ?